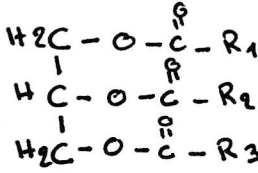
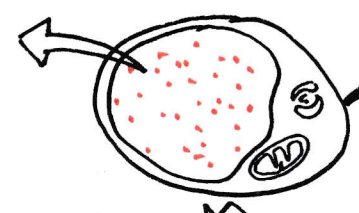


# SCHEMA BILAN LIPIDES

## Triglycéride



## adipocyte



mec

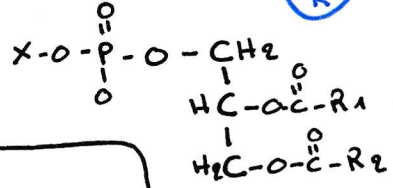
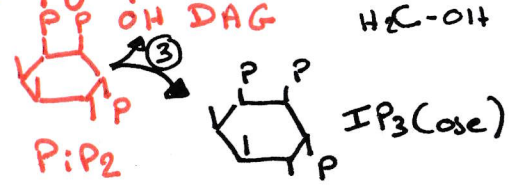
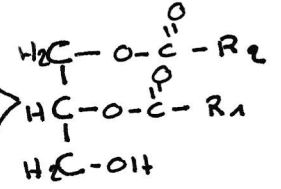
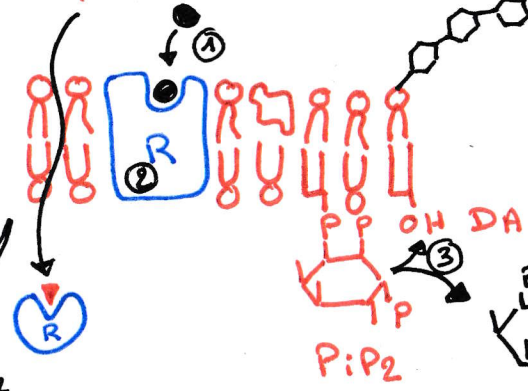
7,5nm

mic

hormone hydrophobe

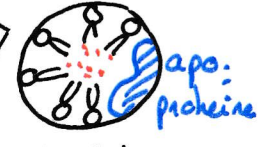
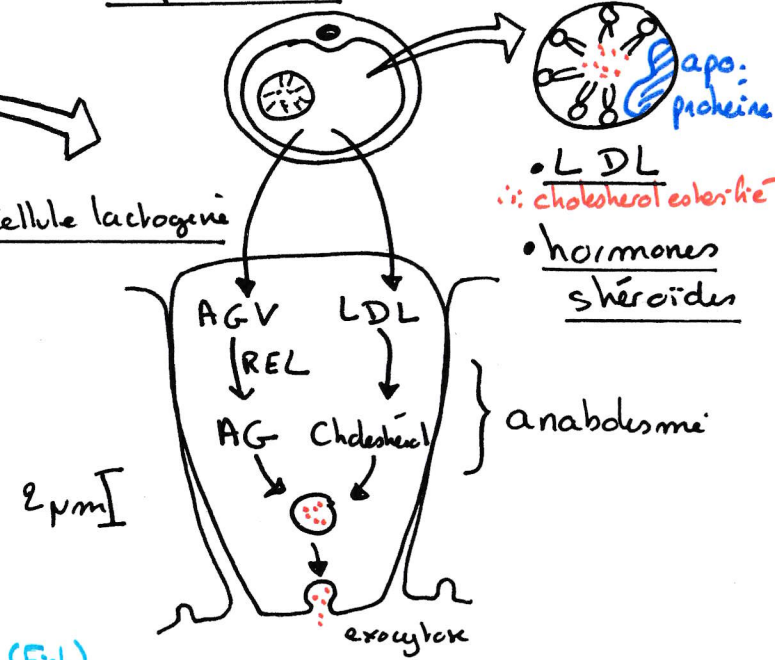
hormone hydrophile

glycolipide



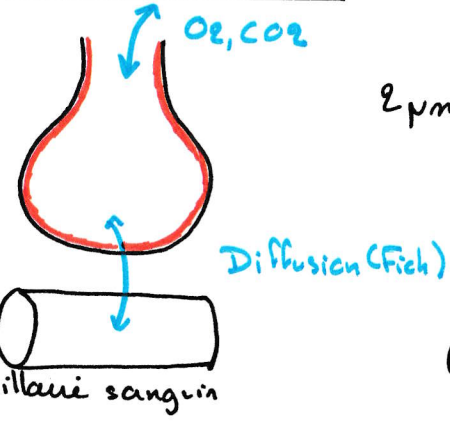
Capillaire (CT)

Cellule lactogène



- LDL
- cholestérol esterifié
- hormones stéroïdes

Poumons: surfactant



une alvéole

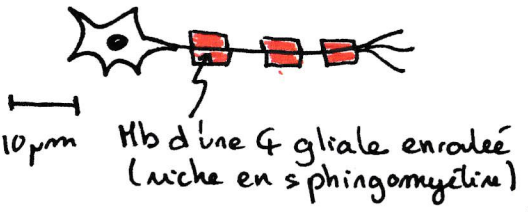
30µm

capillaire sanguin

2µm

Lait: 34% AG saturés  
(400 AG ≠) 66% AG insaturés  
+ cholestérol

- Système nerveux: gaine de myéline des neurones



- Pigments et communication  
caroténoïdes → attraction des insectes  
→ Vit. A de la vache

- Pigments et métabolisme

- chlorophylle
- caroténoïdes

- Cuticule végétale:

