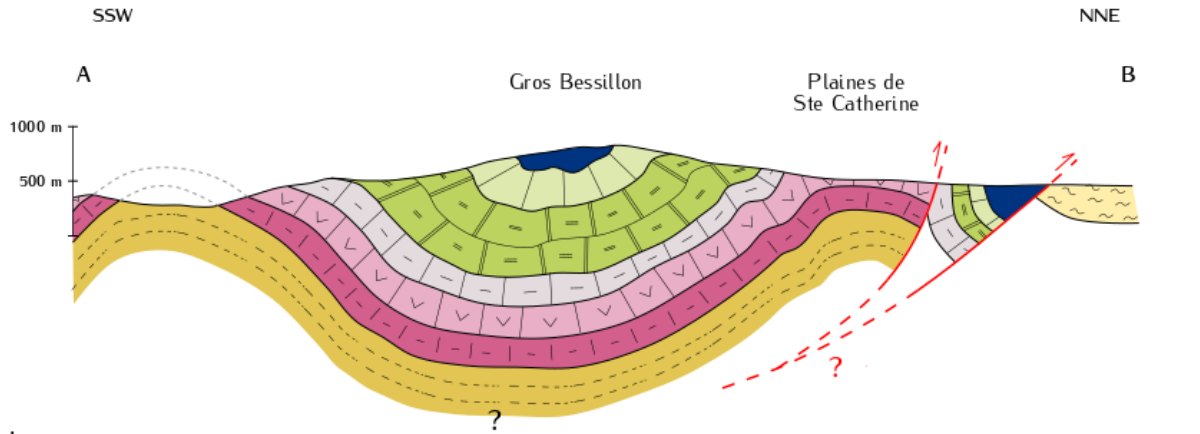


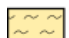
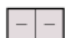







Correction de la géologie SVT5

Coupe géologique :

Coupe géologique à main levée de la carte de Brignoles initialement au 1/50 000



Légende

 c7b-e3 - Rognacien à Sparnacien : argiles rouges	 l4-j1a - Lias moy et sup. à Bajocien inf. : calcaires à silex	
 j5 - Oxfordien moyen : calcaires blancs ou marno calcaires	 l2 Hettangien : dolomies	
 j2bC - Bathonien sup. : calcaires	 t10 - Rhétien indifférencié	 faille
 j1b-2a - Bathonien inf. et Bajocien sup. : marno-calcaires	 t7-9 - Keuper indifférencié	